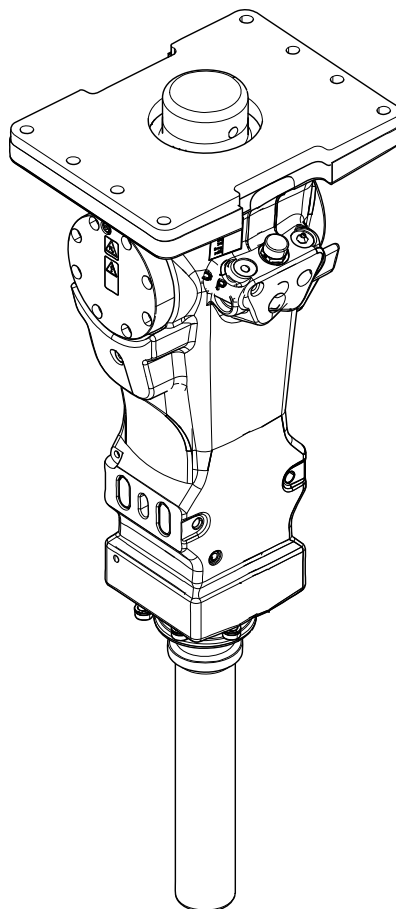


SB 302 Tunnel

Spare parts list

Hydraulic breakers

SB 302 Tunnel s/n BES083100 –



General information

This spare parts list applies to the following:

Part number	Description
8460030063	SB 302 Tunnel

Use only authorized parts. Any damage or malfunction caused by the use of unauthorized parts is not covered by Warranty or Product Liability. Any unauthorized use or copying of the contents or any part thereof is prohibited. This applies in particular to trademarks, model denominations, part numbers, and drawings.

Instructions for use

This spare parts list contains no safety regulations and is merely intended to assist in the ordering of spare parts.

For information about operating, servicing, or repairing, the relevant Safety and operating instructions must be consulted at all costs.

Please observe the safety instructions listed in the relevant Safety and operating instructions!

Service, repair and wear part kits

Label kit 1

Seal kit 3

Lower hammer part kit 5

Accumulator repair kit 7

Mechanical

Spare part list 9

Tightening torque 13

Dimensions (mm) 15

Assembly instruction 16

Options and accessories

Working Tools ClassicLine 18

Optional parts - Restrictor, complete 21

Optional parts - Bushing oversize, complete 23

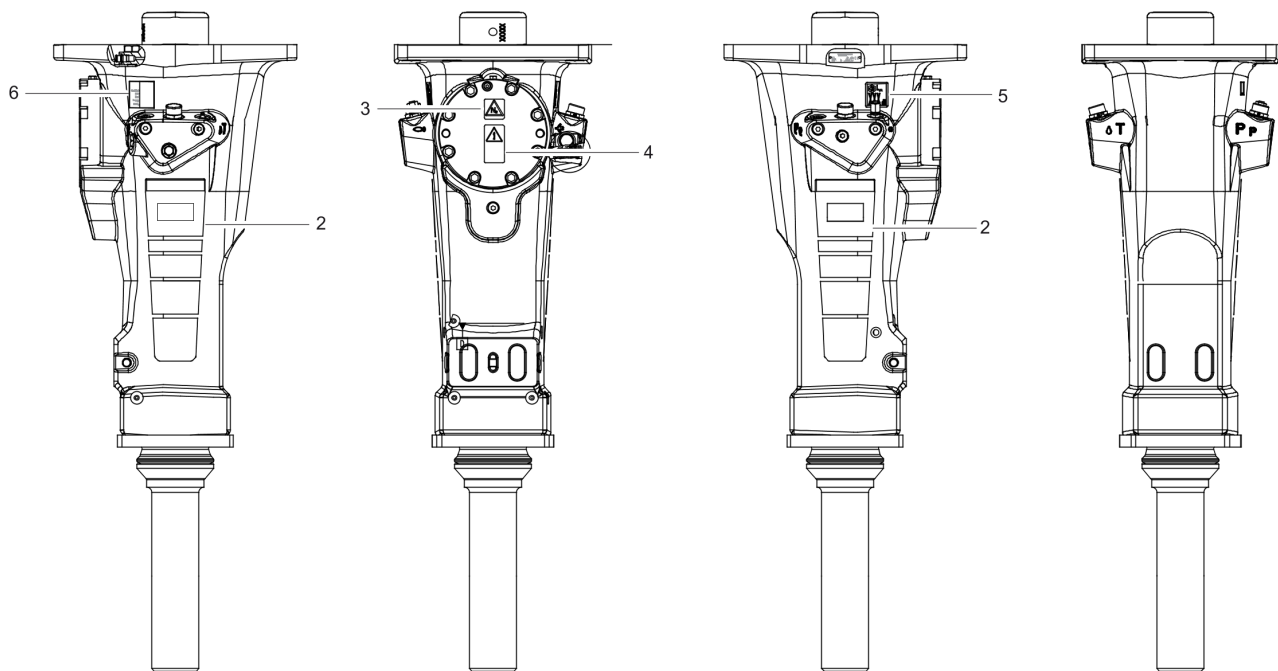
Optional equipment 25

Hydraulic hoses 27

Annex

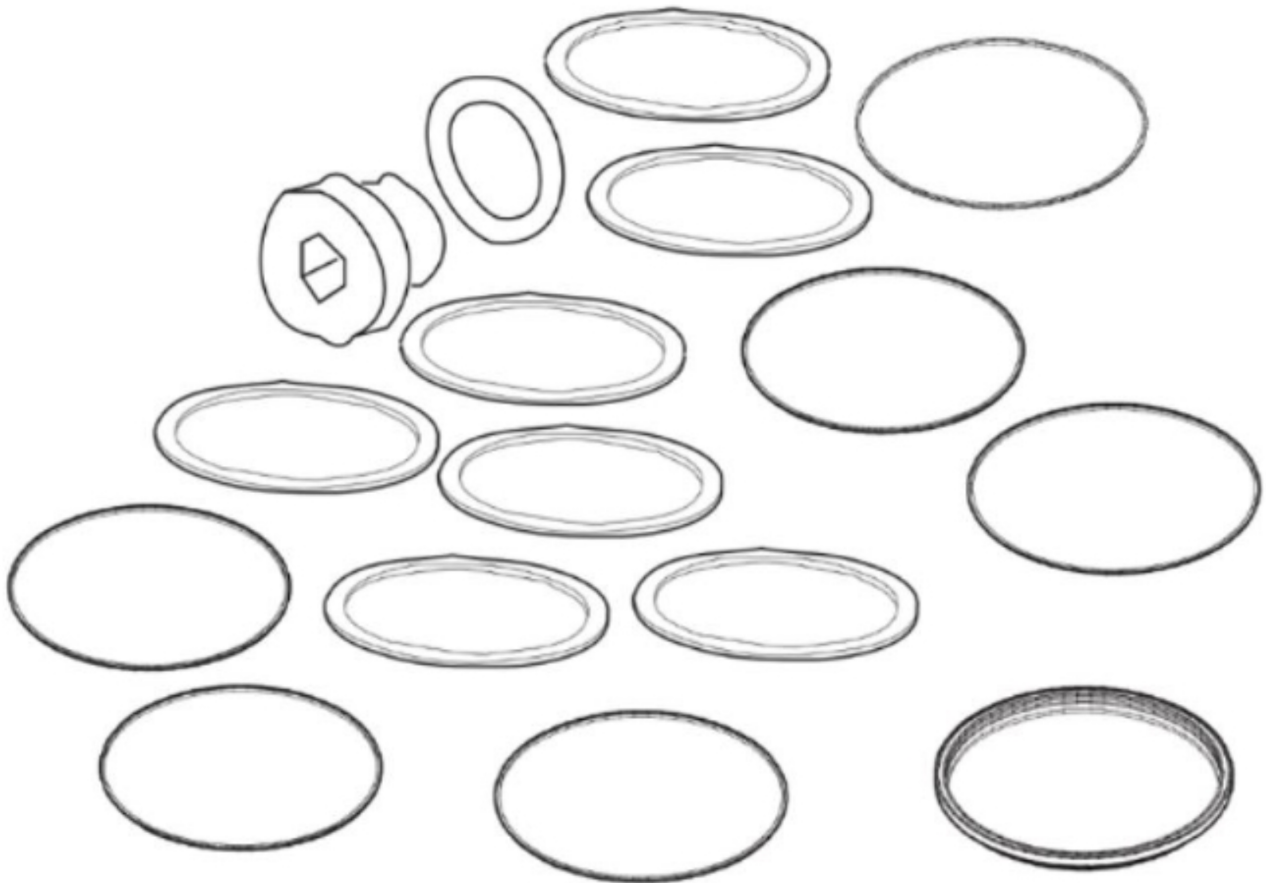
Environmental Product Compliance - REACH Declaration 29

Service, repair and wear part kits Label kit

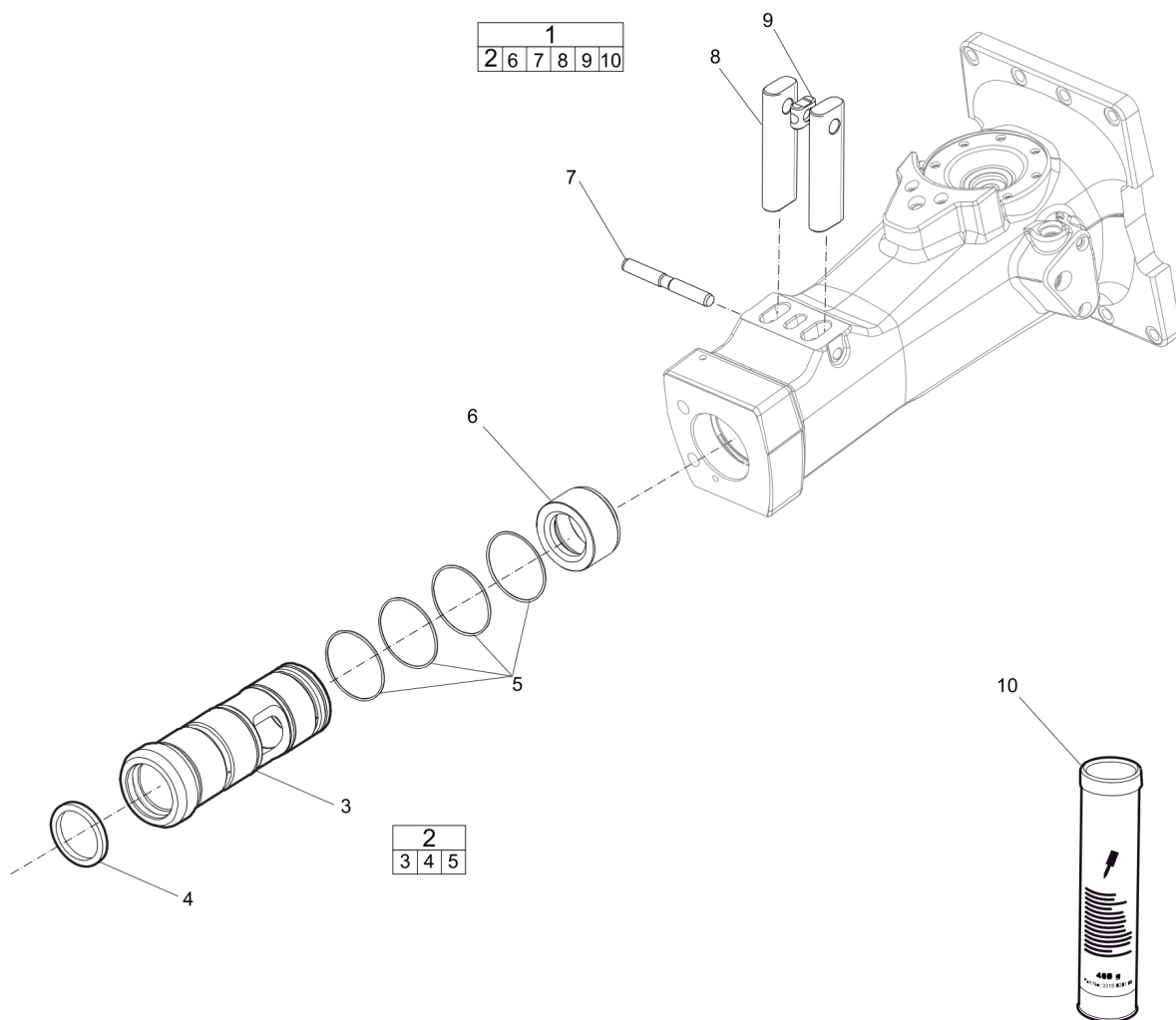


Item	Part No.	Name	Qty	L
1	338207108	Label kit	1	
2	-	Product label SB302	2	
3	3115263000	SAFETY LABEL	1	
4	3115262900	SAFETY LABEL	1	
5	3310132718	Noise level label	1	
6	3315254600	AEM sign	1	

Service, repair and wear part kits Seal kit



Item	Part No.	Name	Qty	L
1	3382070102	Seal kit	1	
-	3315325000	SCRAPER RING	1	
-	0663212000	O-RING	1	
-	0661100024	SEAL WASHER	1	
-	3115329002	SEAL RING	1	
-	0663210617	O-RING	1	
-	0663210669	O-RING	1	
-	0663211400	O-RING	1	
-	0663990031	SEAL RING	9	
-	0663211444	O-RING	2	
-	0663210421	O-RING	2	
-	0663212141	O-RING	2	
-	0661200401	BACK-UP RING	1	
-	0665090014	SEAL RING	2	
-	3315336700	PLUG	1	
-	0665909957	Wiper	1	
-	0665070137	PISTON ROD SEAL	1	
-	0665070146	PISTON ROD SEAL	1	
-	3315280800	VALVE RUBBER	1	
-	0663210785	O-ring	1	
-	0663210713	O-ring	1	



Item	Part No.	Name	Qty	L
1	3382070104	Lower hammer part kit	1	
2	3315434260	Bushing standard, complete	1	
3	-	BUSHING	1	
4	3315325000	SCRAPER RING	1	
5	0663210617	O-RING	1	
6	3315301400	STOP RING	1	
7	3315203110	Lock pin	1	
8	3315203010	Tool retainer	2	
9	3315141900	LOCK BUFFER	1	
10	-	Chisel paste cartridge 400 g	1	

Service, repair and wear part kits Accumulator repair kit

NO EXPLODED VIEW
AVAILABLE
FOR THIS BOM

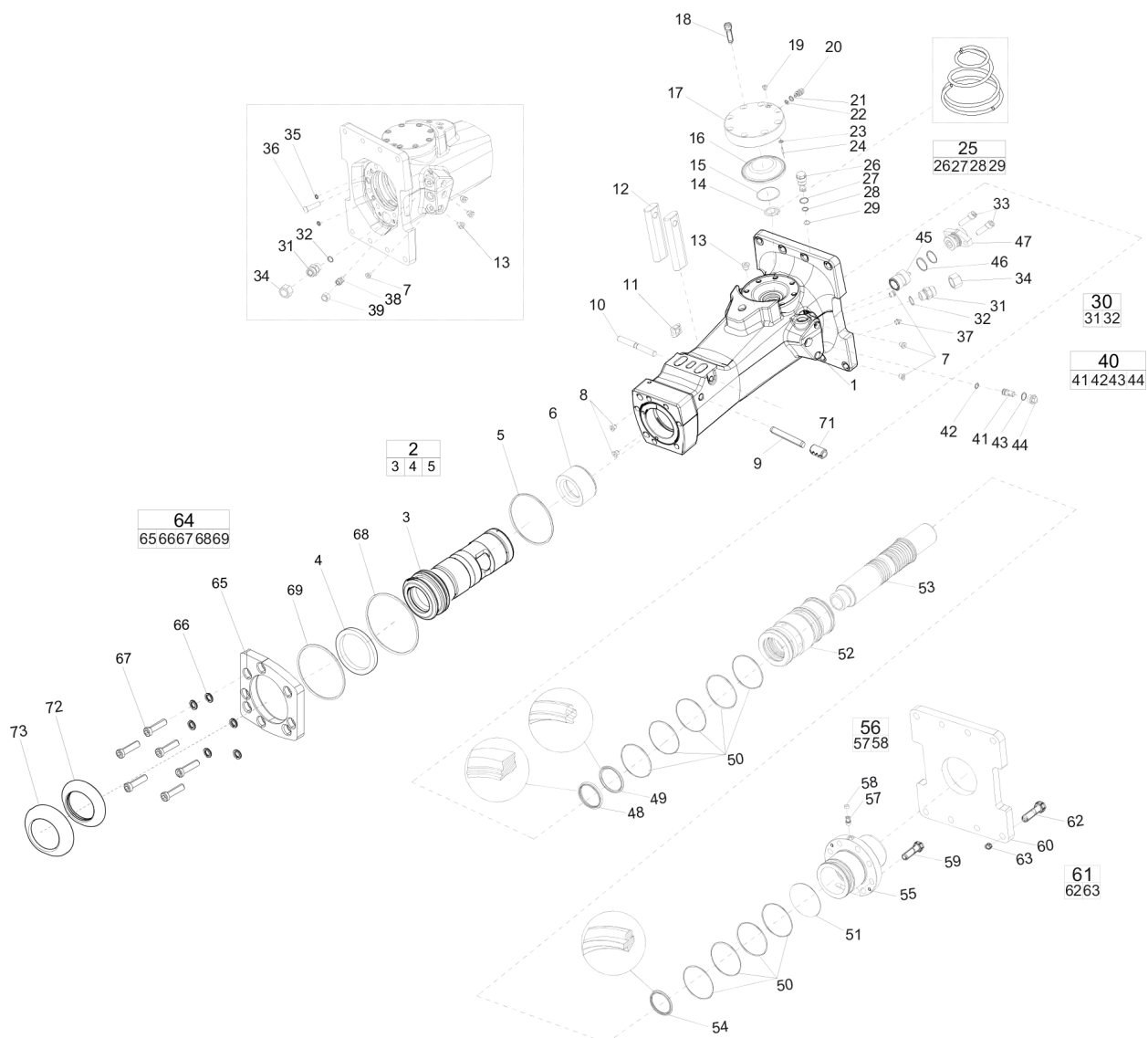
Item	Part No.	Name	Qty	L
1	3315348790	ACCUM.REP.KIT	1	
-	3315303500	COIL SPRING	1	
-	3315400700	Diaphragm support	1	
-	3315235000	DIAPHRAGM	1	
-	3115329002	SEAL RING	1	
-	0663212000	O-RING	1	
-	3315366000	VALVE	1	
-	0663211400	O-RING	1	
-	0101414000	PIN	1	
-	0211196534	HEX SOCK. SCREW	8	A
-	0686371805	PLUG	1	

Comments for Page: Accumulator repair kit

(L)OCAL REMARKS

A | Screw with extra high fatigue strength.

Mechanical Spare part list



Refer to the DocMine web page for most up-to-date information. The printed information might be outdated.

Mon Mar 22 09:28:15 UTC 2021

Item	Part No.	Name	Qty	L
1	-	Breaker body	1	
2	3315434260	Bushing standard, complete	1	
3	-	BUSHING	1	
4	3315353600	Scraper ring	1	
5	0663210617	O-RING	1	
6	3315301400	STOP RING	1	
7	0686644207	PLUG	4	B
8	3315395200	Water Nossle	2	
9	3315434900	Bushing pin	1	
10	3315203110	Lock pin	1	
11	3315141900	LOCK BUFFER	1	
12	3315203010	Tool retainer	2	
13	0686371801	PLUG	4	C
14	3315303500	COIL SPRING	1	
15	3315400700	Diaphragm support	1	
16	3315235000	DIAPHRAGM	1	
17	3315348700	ACCUMULAT.HOUSE	1	
18	0211196534	HEX SOCK. SCREW	8	D
19	0686371805	PLUG	1	E
20	3315366000	VALVE	1	
21	0663212000	O-RING	1	
22	3115329002	SEAL RING	1	
23	0663211400	O-RING	1	
24	0101414000	PIN	1	
25	3315365800	PRESS.REL.VALVE	1	J
26	-	Pressure relief valve	1	
27	0663212141	O-RING	1	
28	0663210421	O-RING	1	
29	0661200401	BACK-UP RING	1	
30	0580001845	Nipple, complete	1	F
31	-	NIPPLE	1	G
32	0664000004	SEAL RING	1	
33	0211110349	Screw, M14 x 65 mm	2	I
34	3361353486	Cap	2	
35	0665090014	SEAL RING	2	
36	3315336700	PLUG	1	
37	3363070299	Grease nipple, ISO 7-R 1/4	1	

Refer to the DocMine web page for most up-to-date information. The printed information might be outdated.

Mon Mar 22 09:28:15 UTC 2021

Item	Part No.	Name	Qty	L
38	3176634800	NIPPLE	1	
39	3176542900	CAP	1	
40	3315369467	RESTRICTION SET	1	H
41	-	Restrictor, Ø 6.7 mm, Ø 0.26 in.	1	
42	0663210421	O-RING	1	
43	0663212141	O-RING	1	
44	-	Restrictor plug	1	
45	3315277600	SLIDE	1	
46	0663211444	O-RING	2	
47	3315352013	Valve cover	1	
48	0665909957	Wiper	1	
49	0665070137	PISTON ROD SEAL	1	
50	0663990031	SEAL RING	9	
51	0663210669	O-RING	1	
52	3315301700	LINER	1	
53	3315302110	Piston	1	
54	0665070146	PISTON ROD SEAL	1	
55	3315302000	BACK HEAD	1	
56	3315244881	CHECK VALVE	1	
57	-	CHECK VALVE	1	
58	3315280800	VALVE RUBBER	1	
59	3315431201	Hexagon bolt	8	
60	3315356600	BASE PLATE	1	
61	3315365360	SCREW SET	1	
62	-	SCREW	8	
63	-	Nut, M16	8	
64	3382070107	Wear plate, complete	1	
65		Wear plate	1	
66	0333520027	Lock washer	6	
67	3315431101	Hexagon socket screw	6	
68	0663210785	O-ring	1	
69	0663210713	O-ring	1	
70	3315434900	Bushing pin	1	
71	0108110322	Spring pin	1	
72	3315239700	DUST COVER	1	
73	3315264100	FRONT SHIELD	1	

Refer to the DocMine web page for most up-to-date information. The printed information might be outdated.

Mon Mar 22 09:28:15 UTC 2021

Comments for Page: Spare part list

(L)OCAL REMARKS

A | For oversize bushings, see section "Bushing oversize, complete".

B | VSTI R 1/4 - ED

C | VSTI R 3/8 - ED

D | Screw with extra high fatigue strength.

E | VSTI R 1/8 - ED

F | There are two "Nipple, complete" on the machine.

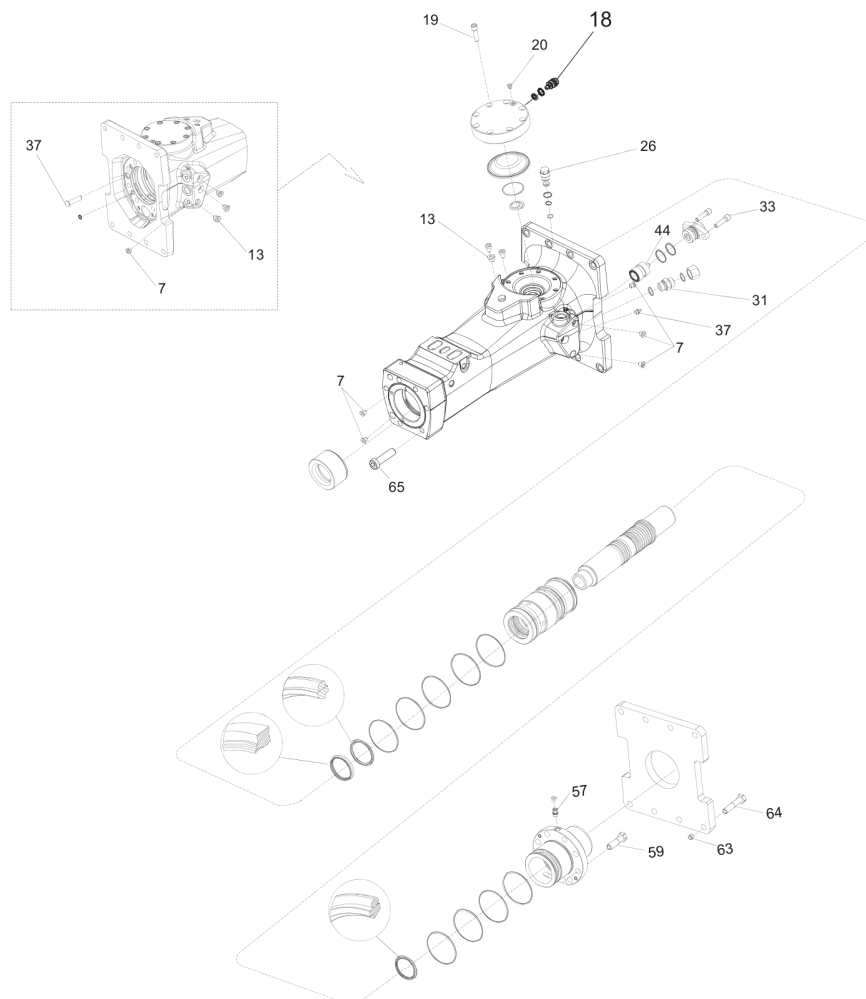
G | 1 3/16 - 12UN G 3/4 A

H | For more restrictors, see section "Restrictor, complete".

I | Screw with extra high fatigue strength.

J | CAS No. see chapter "Environmental Product Compliance - REACH Declaration"

Mechanical Tightening torque



Refer to the DocMine web page for most up-to-date information. The printed information might be outdated.

Mon Mar 22 09:28:16 UTC 2021

Item	Part No.	Name	Qty	L
7	-	Plug - 30 Nm	-	A
13	-	Hexagon socket plug - 80 Nm	-	B
18	-	Charge valve - 27 Nm	-	
19	-	Hexagon socket screw - 120 Nm	-	C
20	-	Plug - 20 Nm	-	
26	-	Pressure relief valve - 80 Nm	-	
31	-	Nipple - 210 Nm	-	
33	-	Screw - 180 Nm	-	
37	-	Grease nipple - 30 Nm	-	
44	-	Restrictor plug - 80 Nm	-	
57	-	Check valve - 30 Nm	-	J
59	-	Hexagon head screw - 180 Nm	-	K
63	-	Nut - 200 Nm	-	L
64	-	Hexagon socket screw - 180 Nm	-	M
65	-	Hexagon socket screw - 240 Nm	-	

Comments for Page: Tightening torque

LOCTITE is a registered trademark of Henkel Corporation. 243 is a trademark of Henkel Corporation. Molykote is a registered trademark of Dow Corning Corporation.

(L)OCAL REMARKS

A | LOCTITE® 243™

B | LOCTITE® 243™

C | Molykote®

J | LOCTITE® 243™

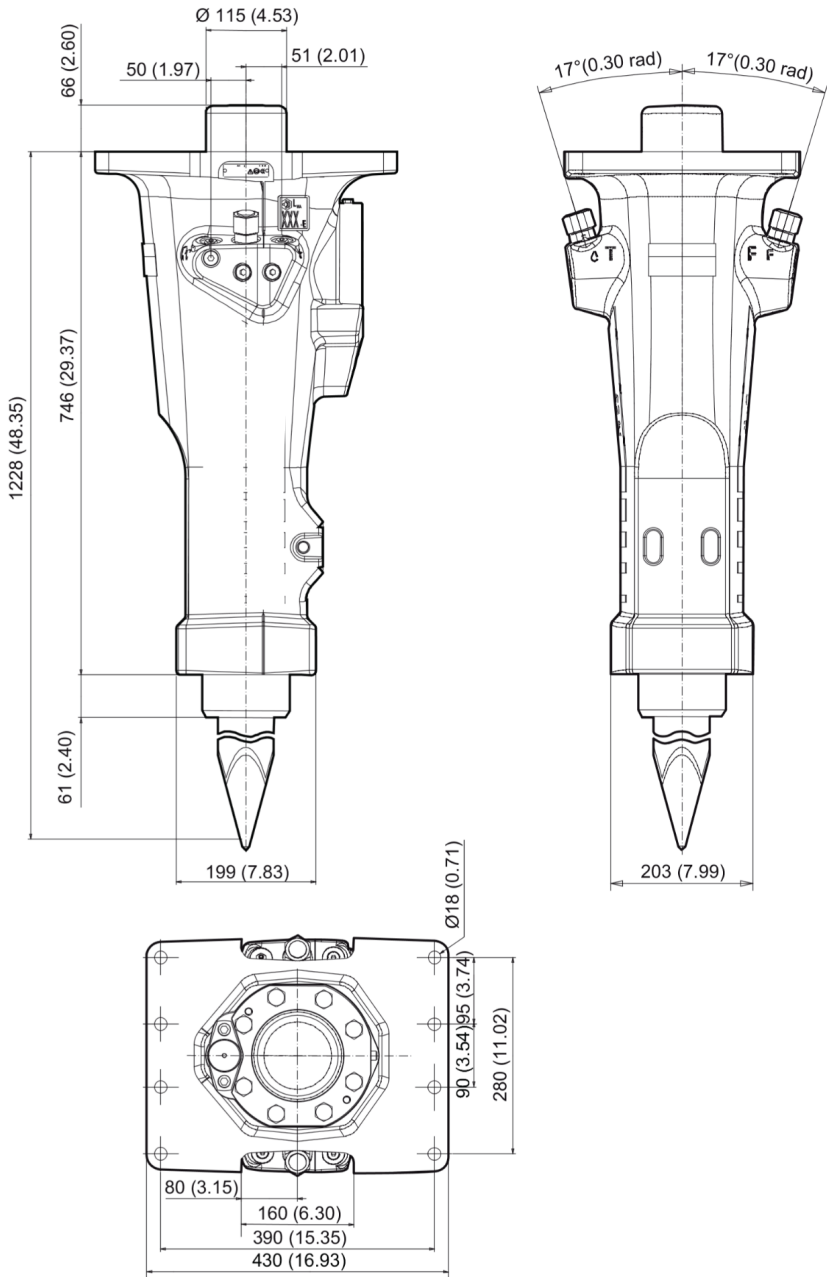
K | Molykote®

L | Molykote®

M | Molykote®

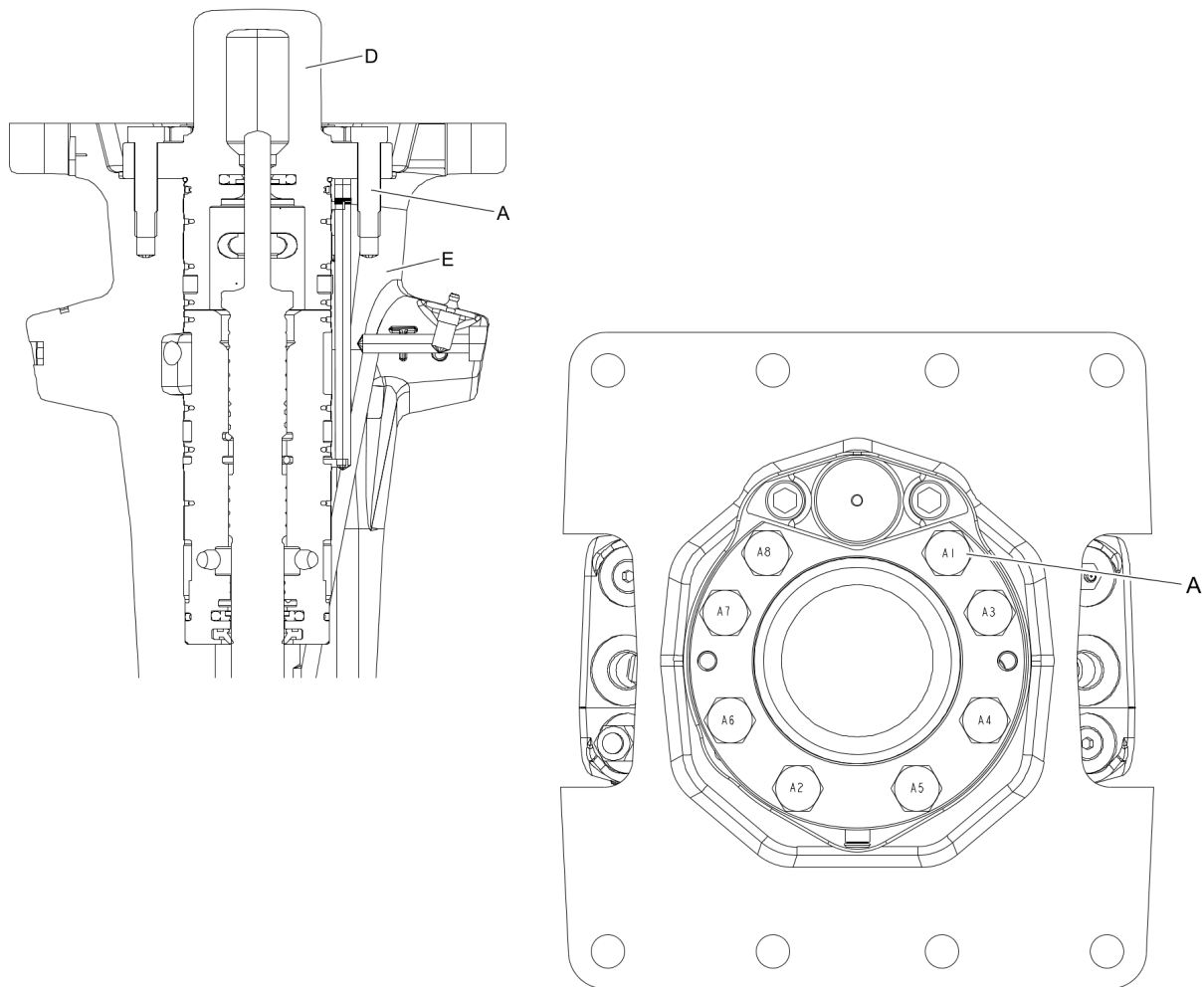
Mechanical Dimensions (mm)

Dimensions Dimensions (mm)



This page intentionally left blank

Mechanical Assembly instruction



1. Press the back head (D) down on the hammer body(E).
2. Grease the screws (A) with Molykote® 1000 (Molykote is a registered trademark of Dow Corning Corporation), and manually fit them on the back head (D)
3. Torque the screws (A) in the order from A1 to A8 in two steps.

NOTICE Always start by fitting screws by hands.

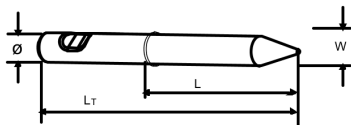
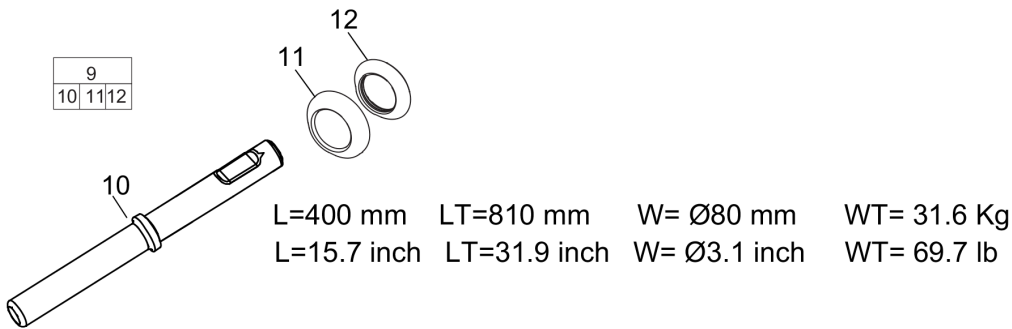
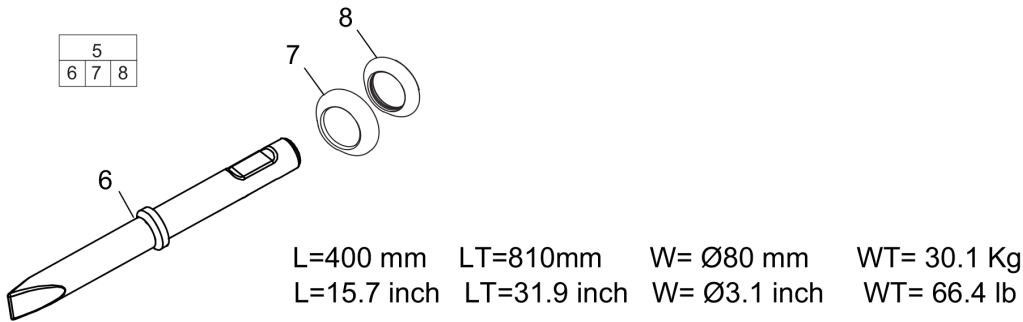
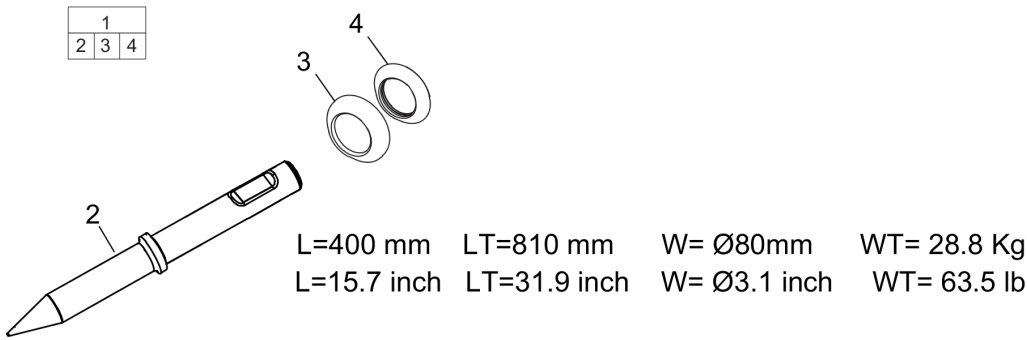
NOTICE Tighten in two stages.

Step 1: 30 Nm

Step 2: 80 Nm

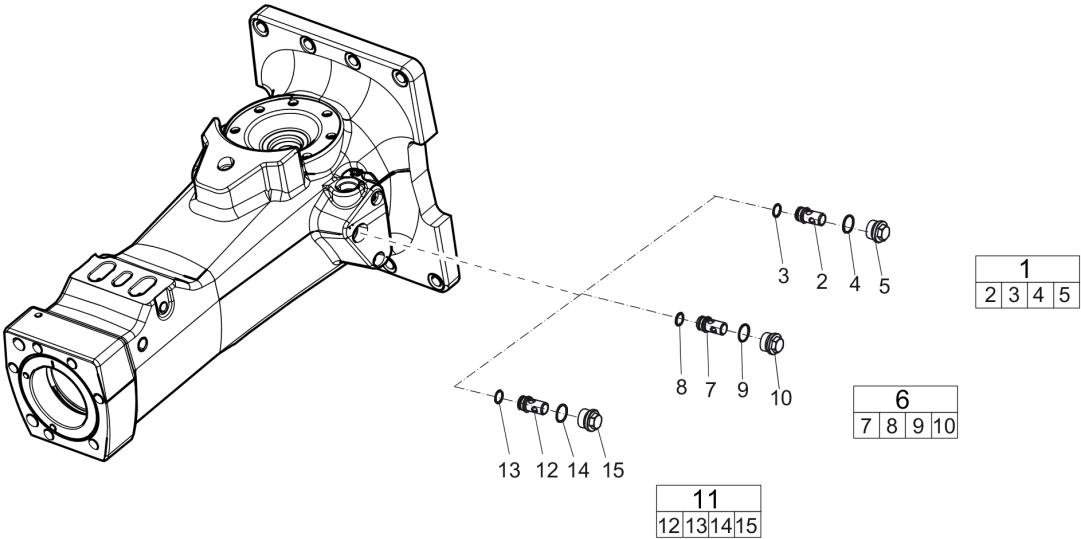
This page intentionally left blank

Options and accessories Working Tools ClassicLine



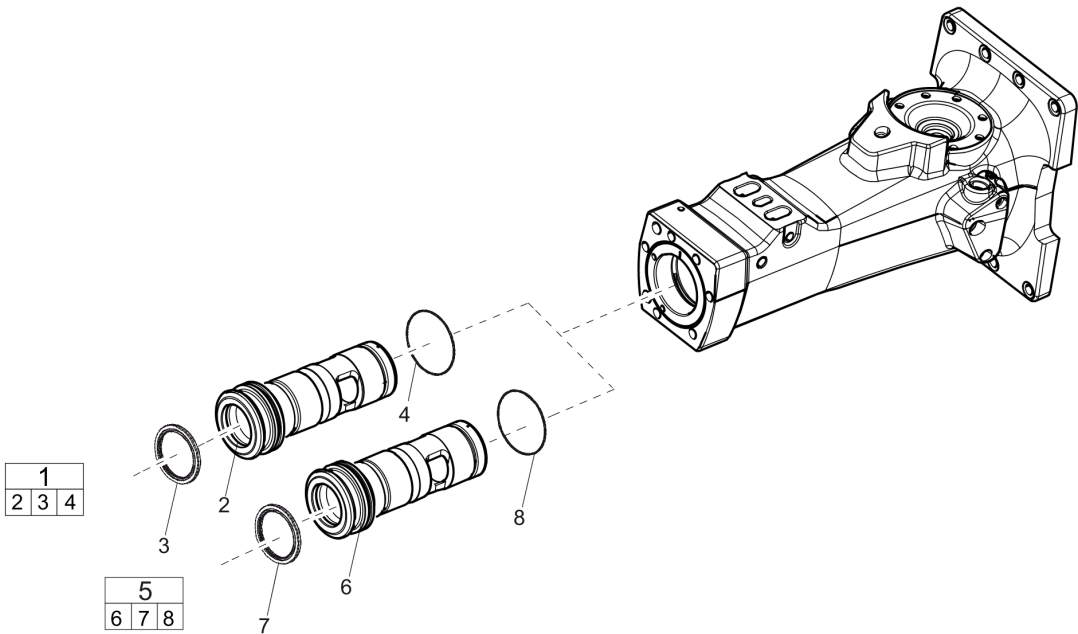
Item	Part No.	Name	Qty	L
1	3083342704	Moil point Tunnel	1	
2		Moil point	1	
3	3315264100	FRONT SHIELD	1	
4	3315239700	DUST COVER	1	
5	3083342705	Chisel cross Tunnel	1	
6		Chisel (cross)	1	
7	3315264100	FRONT SHIELD	1	
8	3315239700	DUST COVER	1	
9	3083342706	Blunt tool Tunnel	1	
10		Blunt tool	1	
11	3315264100	FRONT SHIELD	1	
12	3315239700	DUST COVER	1	

Options and accessories Optional parts - Restrictor, complete



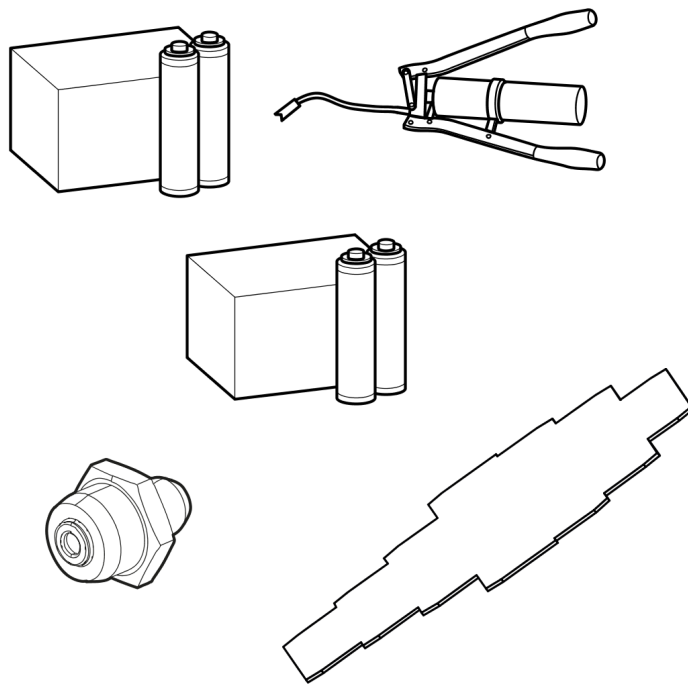
Item	Part No.	Name	Qty	L
1	3315369454	Restrictor, complete (optional)	1	
2	-	Restrictor, Ø 5.4 mm, Ø 0.21 in.	1	
3	0663210421	O-RING	1	
4	0663212141	O-RING	1	
5	3315369200	Restrictor plug	1	
6	3315369460	Restrictor, complete	1	
10	3315369200	Restrictor plug	1	
7	--	Restrictor, Ø 6.0 mm, Ø 0.24 in.	1	
8	0663210421	O-RING	1	
9	0663212141	O-RING	1	
11	3315369464	RESTRICTION SET	1	
15	--	Restrictor plug	1	
14	0663212141	O-RING	1	
13	0663210421	O-RING	1	
12	--	Restrictor, Ø 6.4 mm, Ø 0.25 in.	1	

Options and accessories Optional parts - Bushing oversize, complete



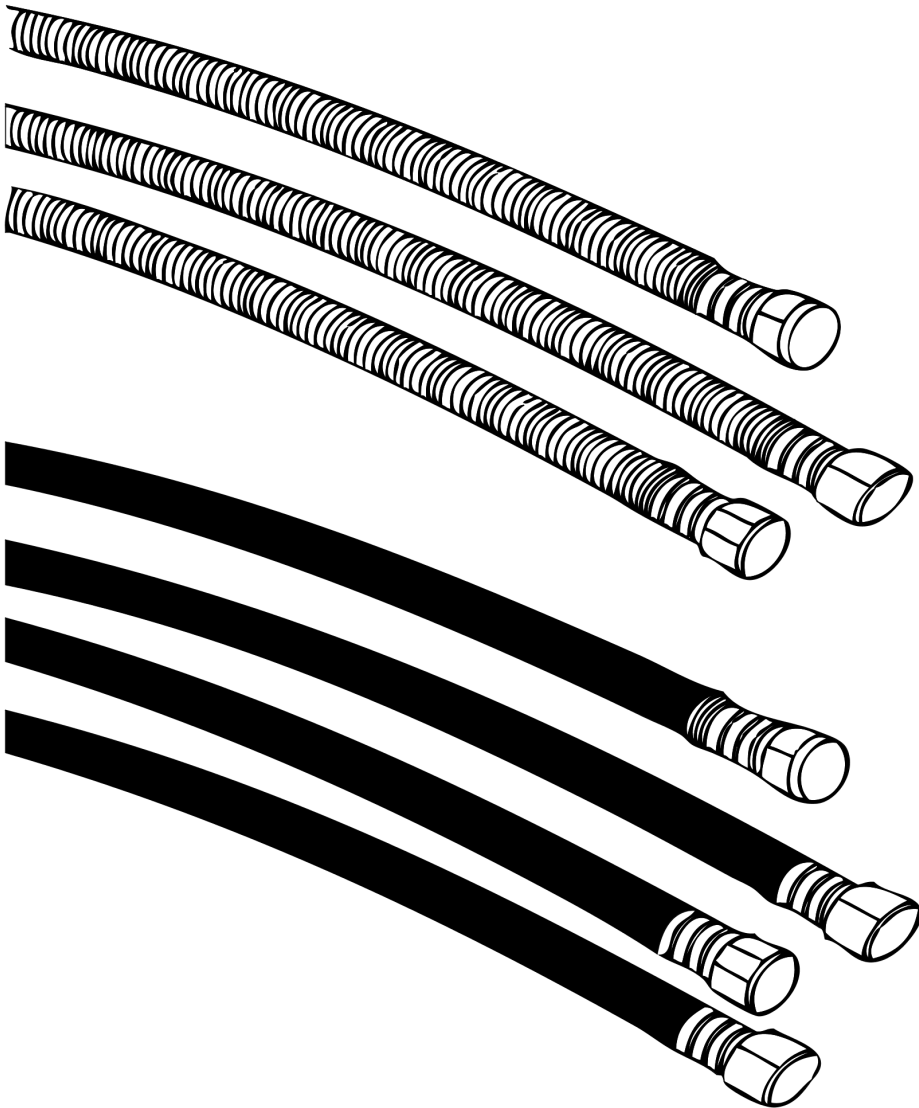
Item	Part No.	Name	Qty	L
1	3315434261	Bushing press fit oversize, complete	1	
2	-	Bushing, Ø111.5 mm, Ø4.39 in.	1	
3	3315325000	SCRAPER RING	1	
4	0663210617	O-RING	1	
5	3315434262	Bushing press fit oversize, complete	1	
6	-	Bushing, Ø113 mm, Ø4.4 in.	1	
7	0663210617	O-RING	1	
8	3315325000	SCRAPER RING	1	

Options and accessories Optional equipment



Item	Part No.	Name	Qty	L
-	3363067123	Automatic lubrication system	1	
-	0909107100	LUBRICAT.GUN	1	
-	3363122355	BIO Chisel paste cartridge for grease gun, 12 x 400 g (0.88 lbs)	1	
-	3363122357	BIO Chisel paste container (15 kg)	1	
-	3363122358	BIO Chisel paste container (45 kg)	1	
-	3360920415	Filling device for accumulator	1	
-	3363094459	Nipple, for charging the accumulator	1	
-	3361329803	Filling hose for charging the accumulator	1	
-	3315353100	Bushing wear controller	1	

Options and accessories Hydraulic hoses



Item	Part No.	Name	Qty	L
-	3360995717	Hose, both ends 18 L(M26 x 1.5) length 1500 mm	2	
-	3362235159	Hose, both ends 18 L(M26 x 1.5) length 2000 mm	2	
-	3363083313	Hose, both ends 18 L(M26 x 1.5) length 2400 mm	2	
-	3363098019	Additional fitting kit(needed to fit two hoses to the hydraulic breaker)	1	

Annex Environmental Product Compliance - REACH Declaration

NO EXPLODED VIEW
AVAILABLE
FOR THIS BOM

Item	Part No.	Name	Qty	L
25	-	Pressure relief valve, complete, Part No. 3315365800 - CAS No. 7439-92-1	-	

Comments for Page: Environmental Product Compliance - REACH Declaration

EU REACH Candidate List substances present in product listed above.

Any unauthorized use or copying of the contents or any part thereof is prohibited.
This applies in particular to trademarks, model denominations, part numbers, and
drawings.